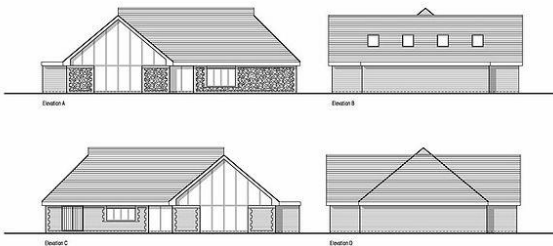


# Westhampnett Parish Council

WINTER 2018

## LATEST NEWS

### Community Hall



The Parish Council is pleased to announce that building of the Community hall has started.

This will be a large meeting hall with kitchen and toilet facilities. This could be used for the meetings of the various groups that currently use the school hall and will provide the location for much wider use by the community such as parent and toddler mornings, Pilates classes, exhibitions etc. Please contact the clerk for latest updates.

### Neighbourhood Plan

Westhampnett Parish Council is in the advanced stages of producing its Neighbourhood Plan. The Plan concentrates on the land south of New Road and not within Downs National Park. It should give the Parish greater control over future development.

<https://www.westhampnettpc.co.uk/neighbourhood-plan>



### **Westhampnett Christmas Tree Celebration**

*Fun for all the family*

Sunday 2 December 2018 2-4.30pm

Westhampnett Village Green

**Make a Christmas bauble to decorate the  
Christmas tree on the Green**

**Wreath making demonstrations**

**Mulled wine, hot chocolate and mince pies**

**Meet Father Christmas**

**4.15pm Christmas Tree switch on and carol  
singing around the tree**

**4.30pm Continue the Christmas  
celebrations with a walk to the Westerton  
Christmas tree**

For further details see

[www.westhampnett.org/christmas-2018](http://www.westhampnett.org/christmas-2018)

### **Westhampnett Speedwatch**

You may have noticed a group of people in Hi-Viz jackets with a speed gun. They are Westhampnett's Speedwatch volunteers who spend a few hours each week checking the speed of drivers. They desperately need more recruits so please contact [westhampnettspeedwatch@hotmail.com](mailto:westhampnettspeedwatch@hotmail.com)

## Madgwick Park Development



Have you seen the activity and machinery at the end of Stane Street and Madgwick Lane? This is the new development by David Wilson and Barratt Homes. This site will also include provision of allotments for Westhampnett residents. This will be a first for WPC to manage so if you have any experience of running an allotment site or are interested in registering your interest, please contact our clerk for further details.

## Contacts Westhampnett Volunteers

Westhampnett Volunteers was formed in 2012 in response to the lack of funding from WSCC, to carryout regular servicing of footpaths, litter clearance and general tidying of our parish.

They regularly cut verges, keep footpaths clear and litter-picking when necessary. Volunteers are covered by the Council's insurance and risk assessments are undertaken. Personal protective equipment (PPE) is provided. Please contact our clerk for further details.

## Rolls Royce Car Park



The 500-space car park for Rolls Royce employees and a dedicated 'drop off and pick up' car park with 40 spaces for the March C of E Primary School with crossing, is on schedule to be completed by the end of the year. Hopefully this should alleviate some of the parking issues for Rolls Royce and The March School.

<b>WPC Clerk</b>	<b><a href="mailto:westhampnettclerk@gmail.com">westhampnettclerk@gmail.com</a></b>
<b>Westhampnett Parish Council</b>	<b><a href="http://www.westhampnettpc.co.uk">www.westhampnettpc.co.uk</a> <a href="https://www.facebook.com/WesthampnettPc">https://www.facebook.com/WesthampnettPc</a></b>
<b>Westhampnett Community Website</b>	<b><a href="https://www.westhampnett.org">https://www.westhampnett.org</a></b>